

ULTRASONIC EQUIPMENTS

Wide Range of Applications in Laboratory & Manufacturing Scale



KGC

EMPOWERING FUTURE
THROUGH RESEARCH & INNOVATION

INTRODUCTION

Welcome to our 2020 - 2021 edition of Product Catalog. We would like to thank you for your continue support and encouragement. Throughout this challenging time, we have grown and transform our business to be more efficient and effective. This will enable us to offer better service and more competitive pricing to our customers.

Our new edition of catalog comes with a easy reference features where we categorized the products into different usage categories, i.e. Advanced Material, Renewable Energy, Bio-Process, Gauge Calibration, Membrane Technology, 3D scanner and others. This will facilitate the users to quickly access to the equipment specification required, and options available to them in term of measuring range or equipment complexity.

In our new catalog, we have also added the equipment to do research in renewable energy like solar cell, fuel cell, flow cell, lithium ion batteries, and membrane technologies. In synergy with our advanced material equipment, we have also added the equipment for material characterization especially in the area of rare earth research and magnetic properties. In line with the manufacturing industry footsteps, the equipment on 3D scanning and 3D printing also have been added in to expand the tools in the research and development for industry 4.0.

To our current customers, we believed our partnership will be strengthen for the years to come. The new catalog will also create new opportunities to build new relationship with new customers.

Lastly, I would like to thanks our staffs for their dedication and sacrifice in supporting the management for a brighter future.

Patrick Tan
Director
KGC (Group of Companies)

Contents

TU-E4 Series Ultrasonic Cell Crusher	3
TU-E7 Series Ultrasonic Cell Crusher	4
TU-Y Series Ultrasonic Cell Crusher	6
UP-250 / UP-400 Handheld Ultrasonic	7
TUN Ultrasonic Cell Crusher	8
TUE Series Ultrasonic Homogenizer	9
Ultrasonic Horn	11
Ultrasonic Homogeneous Reactor	12
TUHP Series High Pressure Ultrasonic Reactor System	17

P₂

Ultrasonic cell crusher



- ◆ TU-E4 series ultrasonic cell crusher(4.3 inch touch screen)
- ◆ TU-E7 series ultrasonic cell crusher(7 inch touch screen)
- ◆ TU-Y series ultrasonic cell crusher(LCD)
- ◆ UP-250 handheld ultrasonic cell crusher(4.3 inch touch screen)
- ◆ TUN non-contact ultrasonic cell crusher(4.3 inch touch screen)
- ◆ TUE Series Ultrasonic Homogenizer(4.3 inch touch screen)
- ◆ Reaction kettle(Single layer & Double layer & Ox-horn cup)
- ◆ Ultrasonic horn

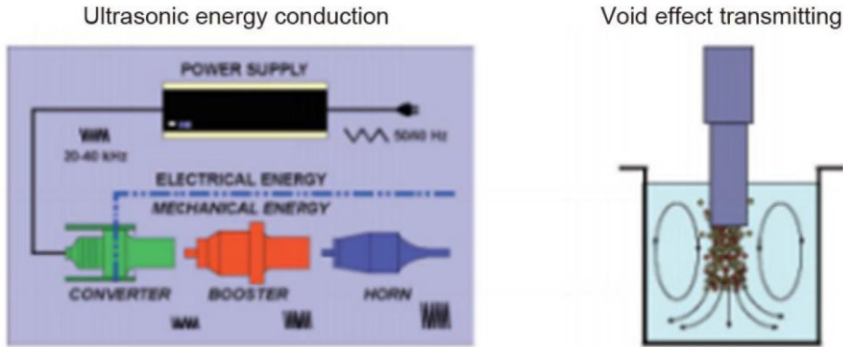
P₁₂

Ultrasonic material dispenser

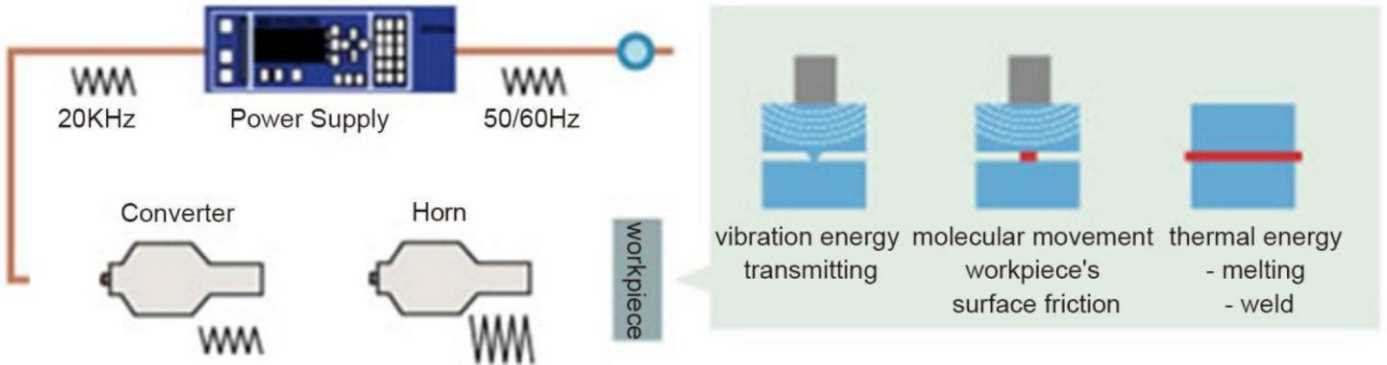


- ◆ TUE Series Ultrasonic Homogeneous Reactor System
- ◆ TUHP Series High pressure ultrasonic reactor system

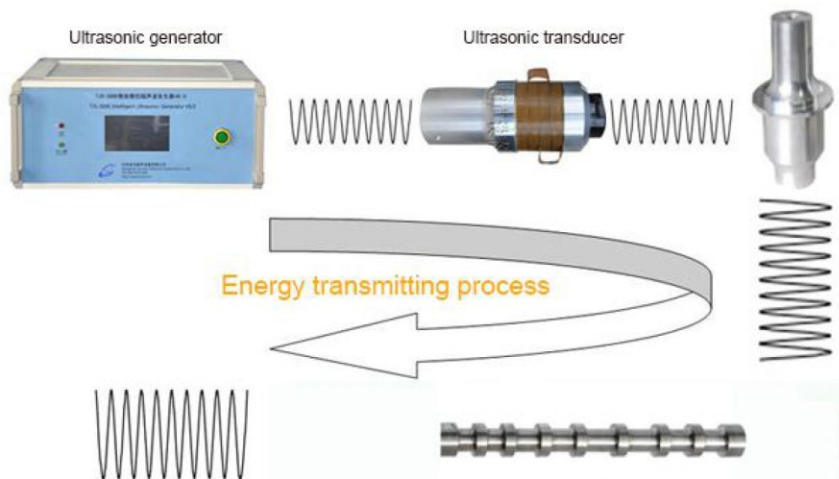
1. Ultrasonic generator transport ordinary electric energy to high efficient transducer, through piezoelectric ceramics effect to produce high-frequency vibration, thus to make different frequency sonic wave, sonic wave through liquid to produce void effect, finally achieve ultrasonic crush and disperse effect.
2. This system is widely used to crush cell, tissue, bacteria, virus, spore and various material's homogeneity, emulsification, mixing, degassing & disperse, lixiviate, extraction, accelerated dissolution, etc. It's widely used in various biology pharmaceutical and material science field.



Ultrasonic energy conduction process:



Ultrasonic energy conduction actual effect:



TU-E4 series ultrasonic cell crusher(touch screen)

Instrument description:

Ultrasonic cell disruption system (crusher) is a multi-function & multi-purpose instrument, which use high strength ultrasonic to cause cavitation effect in liquid, for material ultrasonic processing. It could be used to crush a variety of animal & plant cells, viruses cells, also suitable for emulsification, separate, homogenization, extraction, defoaming, cleaning and speed up chemical reaction,etc.

Application: biological chemistry, microbiology, medicinal chemistry, surface chemistry, physics, zoology,etc.

technical parameters:

Model	TU-150E4	TU-250E4	TU-650E4	TU-900E4	TU-1000E4	TU-1200E4	TU-1800E4
Frequency (KHz)	20-25KHz Automatic tracking	20-25KHz Automatic tracking	20-25KHz Automatic tracking	20-25KHz Automatic tracking	20-25KHz Automatic tracking	19.5-20.5KHz Automatic tracking	19.5-20.5KHz Automatic tracking
Power(W)	2-150W adjustable	5-250W adjustable	5-650W adjustable	10-900W adjustable	10-1000W adjustable	20-1200W adjustable	20-1800W adjustable
Horn (mm)	Φ6	Φ6	Φ6	Φ6 or 10	Φ6 or Φ10	Φ20	Φ20 or Φ22
Optional Horn (mm)	Φ2、Φ3、Φ8	Φ2、Φ3、Φ8、 Φ10	Φ2、Φ3、Φ10、 Φ12	Φ2、Φ3、Φ8、 Φ10、Φ12、Φ15	Φ2、Φ3、Φ8、 Φ10、Φ12、Φ15	Φ6、Φ10、 Φ15、Φ22、 Φ25	Φ10、Φ15、 Φ20、Φ25、 Φ28
Disruption Capacity(ml) (Need to choose the corresponding horn)	0.1-150	0.1-250	0.2-500	0.2-600	0.1-750	10-1000	50-1200
Input method	Touch control						
Display	4.3 inch TFT						
Display items	Temperature, power, wave form, amplitude, pulse, time etc, total 10 items.						
Protection device	Self-diagnostic function, program automatic error correction, over-load / over- temp. Protection display,etc.						
Login password protection	Have						
Computer on-line function	Optional						

TU-E7 series ultrasonic cell crusher(touch screen)

Instrument description:

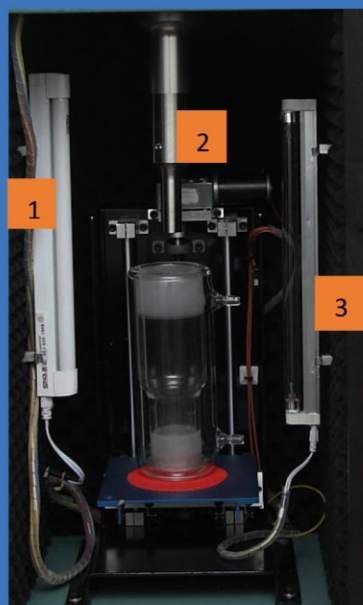
Ultrasonic cell disruption system (crusher) is a multi-function & multi-purpose instrument, which use high strength ultrasonic to cause cavitation effect in liquid, for material ultrasonic processing. It could be used to crush a variety of animal & plant cells, viruses cells, also suitable for emulsification, separate, homogenization, extraction, defoaming, cleaning and speed up chemical reaction,etc.

Application: biological chemistry, microbiology, medicinal chemistry, surface chemistry, physics, zoology,etc.

technical parameters:

Model	TU-150E7	TU-250E7	TU-650E7	TU-900E7	TU-1000E7	TU-1200E7	TU-1800E7
Frequency (KHz)	20-25KHz Automatic tracking	20-25KHz Automatic tracking	20-25KHz Automatic tracking	20-25KHz Automatic tracking	20-25KHz Automatic tracking	19.5-20.5KHz Automatic tracking	19.5-20.5KHz Automatic tracking
Power(W)	2-150W adjustable	5-250W adjustable	5-650W adjustable	10-900W adjustable	10-1000W adjustable	20-1200W adjustable	20-1800W adjustable
Horn (mm)	Φ6	Φ6	Φ6	Φ6 or 10	Φ6 or Φ10	Φ20	Φ20 or Φ22
Optional Horn (mm)	Φ2、Φ3、Φ8	Φ2、Φ3、Φ8、 Φ10	Φ2、Φ3、Φ10、 Φ12	Φ2、Φ3、Φ8、 Φ10、Φ12、Φ15	Φ2、Φ3、Φ8、 Φ10、Φ12、Φ15	Φ6、Φ10、 Φ15、Φ22、 Φ25	Φ10、Φ15、 Φ20、Φ25、 Φ28
Disruption Capacity(ml) (Need to choose the corresponding horn)	0.1-150	0.1-250	0.2-500	0.2-600	0.1-750	10-1000	50-1200
Input method	Touch control						
Display	7 inch TFT						
Display items	Temperature, power, wave form, amplitude, pulse, time etc, total 10 items.						
Protection device	Self-diagnostic function, program automatic error correction, over-load / over- temp. Protection display,etc.						
Login password protection	Have						
Computer on-line function	Optional						

TU-E4 series ultrasonic cell crusher(touch screen)



- 1 Illuminating system (optional)
- 2 Electric automatic lifting system (optional)
- 3 Sterilization system (optional)

Ultrasonic cell crusher

Ultrasonic material dispenser

Ultrasonic horn selection guide parameters:

Model Chinese standard	English system	Frequency (KHz)	Suggest power range reference value	Crush capacity reference value
Φ2	1/12"	20-25KHz	min-150W	0.2-5ml
Φ3	1/8"	20-25KHz	min-250W	3-10ml
Φ6	1/4"	20-25KHz	20-400W	10-100ml
Φ10	5/12"	20-25KHz	100-600W	30-300ml
Φ12	1/2"	20-25KHz	200-900W	50-500ml
Φ15	5/8"	20-25KHz 19.5-20.5KHz	300-1000W	100-600ml
Φ20	4/5"	19.5-20.5KHz	400-1100W	100-1000ml
Φ22	5/6"	19.5-20.5KHz	400-1100W	200-1000ml
Φ25	1"	19.5-20.5KHz	800-1500W	500-1200ml

TU-Y series ultrasonic cell crusher(LCD)

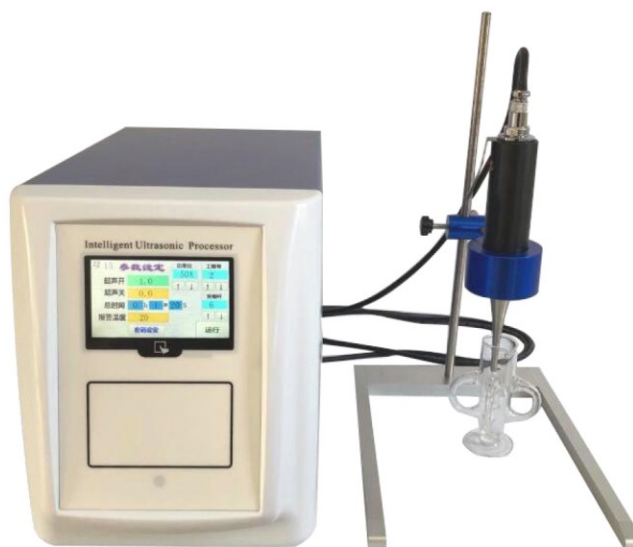
LCD temperature control ultrasonic cell disruption system has beautiful appearance and reliable performance, LCD large screen display, central computer centralized control, ultrasonic / interval / total time / power these could be set by yourself, starting up amplitude transformer is optional, sample temperature display, automatic frequency tracking, fault automatic alarm.

Ultrasonic cell disruption system use PWM to control switch power, power is continuously adjustable, could store 50 sets research parameters, all functions display in large screen.

Technical parameters:

Model	TU-150Y	TU-250Y	TU-650Y	TU-900Y	TU-1000Y	TU-1200Y	TU-1800Y
Frequency (KHz)	20-25KHz Automatic tracking	20-25KHz Automatic tracking	20-25KHz Automatic tracking	20-25KHz Automatic tracking	20-25KHz Automatic tracking	19.5-20.5KHz Automatic tracking	19.5-20.5KHz Automatic tracking
Power(W)	2-150W adjustable	5-250W adjustable	5-650W adjustable	10-900W adjustable	10-1000W adjustable	20-1200W adjustable	20-1800W adjustable
Horn (mm)	Φ6	Φ6	Φ6	Φ6 or 10	Φ6 or Φ10	Φ20	Φ20 or Φ22
Optional Horn (mm)	Φ2、Φ3、Φ8	Φ2、Φ3、Φ8、Φ10	Φ2、Φ3、Φ10、Φ12	Φ2、Φ3、Φ8、Φ10、Φ12、Φ15	Φ2、Φ3、Φ8、Φ10、Φ12、Φ15	Φ6、Φ10、Φ15、Φ22、Φ25	Φ10、Φ15、Φ20、Φ25、Φ28
Disruption Capacity(ml) (Need to choose the corresponding horn)	0.1-150	0.1-250	0.2-500	0.2-600	0.1-750	10-1000	50-1200
Store data	20 sets	20 sets	20 sets	20 sets	20 sets	20 sets	20 sets
Temp alarm range	0-100 °C	0-100 °C	0-100 °C	0-100 °C	0-100 °C	0-100 °C	0-100 °C
Instrument protection function	Over-temp.	Over-temp.	Over-temp.	Over-temp.	Over-temp.	Over-temp.	Over-temp.
Display	LCD display	LCD display	LCD display	LCD display	LCD display	LCD display	LCD display

UP-250 / UP-400 handheld ultrasonic cell crusher



technical parameters:

Model	UP-250	UP-400
Frequency (KHz)	20-30KHz Automatic tracking	20-30KHz Automatic tracking
Power(W)	2.5-250W adjustable	5-400W adjustable
Horn (mm)	Φ3 or Φ5	Φ6
Optional Horn (mm)	Φ2、Φ3、Φ6	Φ2、Φ3、Φ5、Φ8
Crush Capacity (ml)	0.1-150	0.1-300
Temperature alarm range	0-100 °C	
Instrument protection function	Over-temperature	
Foot switch	Optional	
Display	4.3 inch TFT	

Note: Instruments add automatic or manual operation working mode (foot switch is optional); ultrasonic power could be continuously adjustable with 1% precision, transducer has small size and light weight, you could hold it in hand to do micro sample research, also could put it on fixed support.

TUN ultrasonic cell crusher(non-contact type)

TUN-R series ultrasonic cell crusher is used for asepsis crush, it could through centrifuge tube to break chromosome and crush cell (suitable for biology dangerous products and harmful sample), equipped with silencer hold-down device.

Compared with traditional probe ultrasonic cell crusher, traditional cell crusher's probe need to contact with sample directly, need to use one same probe again and again, which is easy to cause sample cross pollution. And also as every time the depth of probe insert sample is not same, so each time ultrasonic energy distribution is not uniform, finally effect the repeatability and precision of research result.

For TUN-R series ultrasonic cell crusher, don't need operate probe frequently, each sample is put in total closed individual test tube, ultrasonic energy distribution is uniform, high efficient experiment, reliable test result, excellent repeatability. As all these advantages, TUN-R series ultrasonic cell crusher already become the standard instrument for ChIP (chromatin co-immunoprecipitation) and blood products, vaccine products, DNA shear research institution.



Ultrasonic cell crusher

Ultrasonic material dispenser

technical parameters:

Model	TUN-R1200	TUN-R2200	TUN-R3200
Frequency(KHz)	19.5-20.5KHz Automatic tracking		
Power(W)	20-1200W adjustable	100-2200W adjustable	500-3200W adjustable
Horn (mm)	Φ20	Φ60	Φ70
Standard crush capacity at a time (ml)	1.5 or 2ML*4 holes	1.5 or 2ML*16 holes	1.5 or 2ML*32 holes
Centrifugal pipe support optional (ml)	0.2ml*8 or 0.5ml*6 or 5ml*3 holes	0.5ml*18 or 5ml*18 holes or 15ml*15 holes or 50ml*5 holes	0.5ml*48 or 5ml*18 holes or 15ml*15 holes or 50ml*5 holes or 250ml*1 holes
Constant temp. Range °C	0-100(Optional low temperature constant temperature)		
Store data	20 sets		
Display	4.3 inch TFT		

TUE Series Ultrasonic Homogenizer

Function description:

Ultrasonic Homogenizer through its “cavitation effect” achieve oil blended with water emulsification, water blended with oil emulsification, dispersion phase and continuous phase mixing homogenization, it's an advanced phonochemistry method to replace the traditional emulsify process such as propeller and colloid mill, etc. An important feature of ultrasonic emulsify is that you don't need use or use little emulgator to get most stable emulsion.

Application: food industry, paper making, oil paint, chemical industry, pharmaceutical, spinning, fuel oil thermoelectricity, fuel oil central air-conditioning, oil, metallurgy, etc. Fuel oil blended with water combustion is an important arisen program now.

The core content of ultrasonic nanotechnology is to solve agglomeration of nano particles problem, as nano particles themselves is easy to reunite, want to get single dispersive nano particle is very difficult, so how to make nano particles uniform disperse into basal body, this is the key technology of nanotechnology.

TOPTION brand ultrasonic series products all use ultrasonic “cavitation effect” to disperse the glomerate particles. Add particle suspension liquid (liquid phase) in super strong sound field, use suitable ultrasonic amplitude to process.

As the inherent feature of powder particle aggregation, for some powder which is dispersed not well in medium, you could add suitable dispersing agent to make dispersion keep stable, generally could reach dozens of nano, even smaller. This type ultrasonic material emulsifying dispenser is most suitable to disperse nanometer materials (such as carbon nano tube, graphene, silicon dioxide).



technical parameter:

Model	TUE-500	TUE-1000	TUE-1500	TUE-3000
Frequency (KHz)	20-30KHz Automatic tracking	20-25KHz Automatic tracking	19.5-20.5KHz Automatic tracking	19.5-20.5KHz Automatic tracking
Power (W)	5-500W adjustable	10-1000W adjustable	20-1500W adjustable	1000-3000W adjustable
Horn (mm)	Φ6	Φ10	Φ20 or 22	Φ40(mm)加长型
Optional Horn (mm)	Φ2、Φ3、Φ8、Φ10	Φ6、Φ8、Φ10、 Φ12、Φ15	Φ10、Φ15、Φ25	Φ20、Φ35、Φ40 加长型、Φ50 (mm)
Crush capacity (ml)	0.2-400	10-600	50-1500	500-5000
Instrument protection function	Over-temperature protection	Over-temperature protection	Over-temperature, protection	Over-temperature, protection
Display	4.3 inch TFT	4.3 inch TFT	4.3 inch TFT	4.3 inch TFT

Reaction kettle(Single layer & Double layer & Ox-horn cup

Ultrasonic emulsifier matching reactor ([double beaker](#), [horn cup](#), [double closed reactor](#))

----Recommended beaker or horn cup According to the amount of processing corresponding to ultrasonic power.

1. Double-layer constant temperature beaker capacity specification The standard is now available in 50, 100, 300, 500, 1000, 2000, 5000ml 7 specifications, material borosilicate glass thick ultrasonic special.
2. Horn Cup Capacity Specifications The standard is now 50, 100, 500ml.
3. Double-layer closed reactor capacity specification The standard is now 100, 200, 400, 600, 1000ml, and the material is made of high borosilicate glass thick ultrasonic.

Reaction kettle(Single layer & Double layer & Ox-horn cup)



Ultrasonic horn



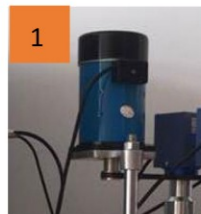
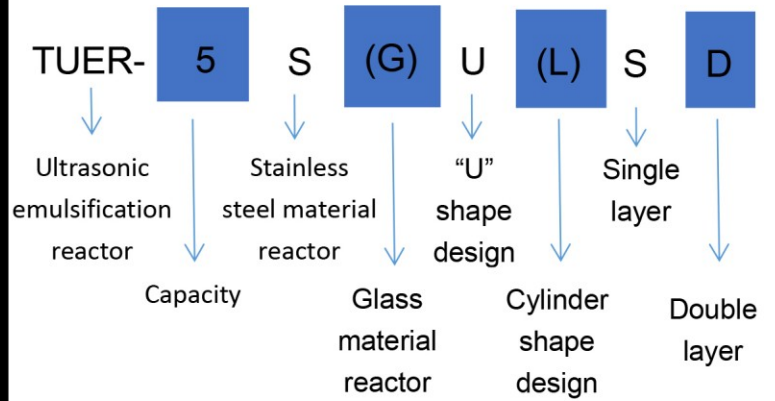
Ultrasonic horn selection guide parameters:

Model standard	Chinese	English system	Frequency (KHz)	Suggest power reference value	range	Crush capacity value	reference
Φ2		1/12"	20-25KHz	min-150W		0.2-5ml	
Φ3		1/8"	20-25KHz	min-250W		3-10ml	
Φ6		1/4"	20-25KHz	20-400W		10-100ml	
Φ10		5/12"	20-25KHz	100-600W		30-300ml	
Φ12		1/2"	20-25KHz	200-900W		50-500ml	
Φ15		5/8"	20-25KHz 19.5-20.5KHz	300-1000W		100-600ml	
Φ20		4/5"	19.5-20.5KHz	400-1100W		100-1000ml	
Φ22		5/6"	19.5-20.5KHz	400-1100W		200-1000ml	
Φ25		1"	19.5-20.5KHz	800-1500W		500-1200ml	

Ultrasonic Homogeneous Reactor System



SS304L Cylinder Reactor



1. Mechanical drive stirring motor, makes material mixing more uniform.



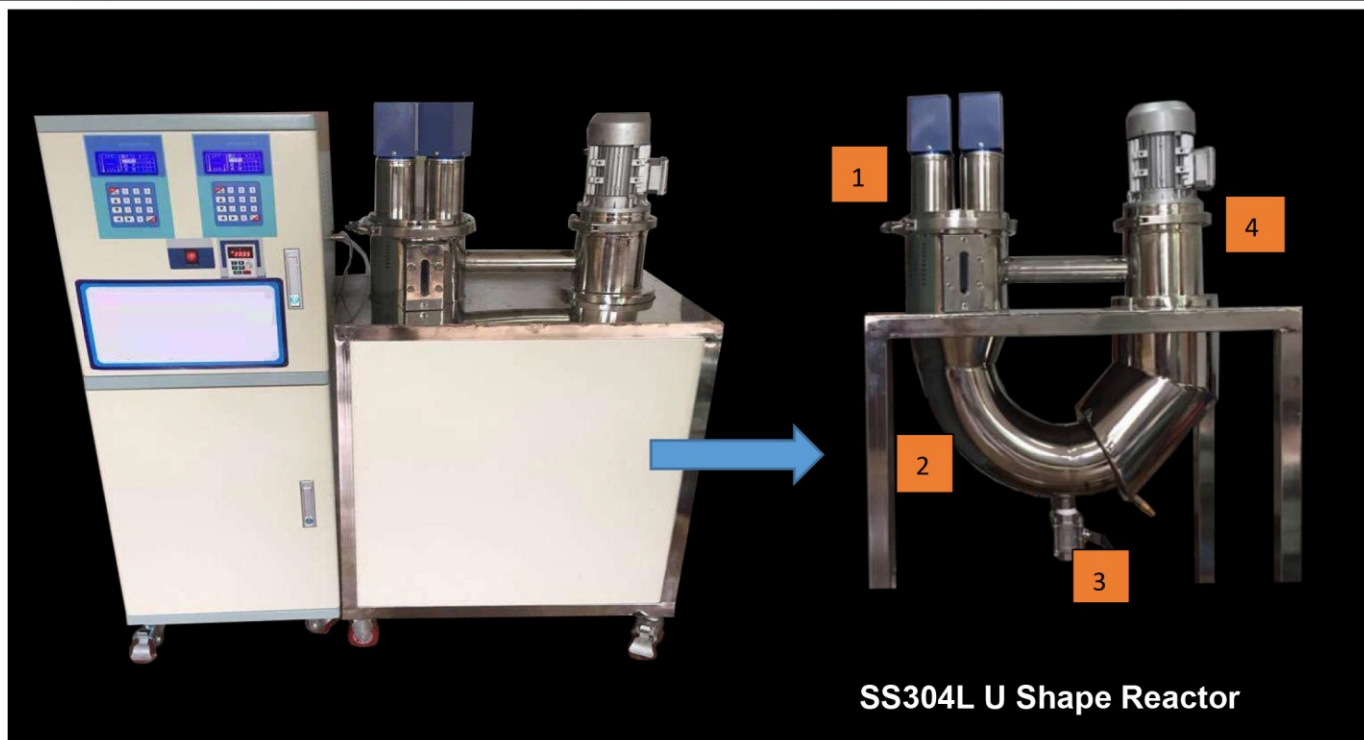
2. Multi ultrasonic working head combined together, large power, much better emulsification result.

Ultrasonic cell crusher

Ultrasonic material dispenser

Glass material ultrasonic reactor

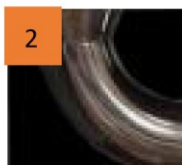




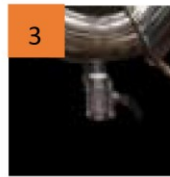
SS304L U Shape Reactor



1. Multi ultrasonic working head combined together for much better sample emulsification result.



2. In-built circulating system makes sample get more uniform mixing, no dead angle.



3. Downward discharging valve, more convenient for material discharging.



4. Vertical electric stirring makes material mixing more uniform.

Description of Pilot ultrasonic emulsification reactor:

The core content of ultrasonic nanotechnology is how to solve the problem agglomeration of nanoparticles, as nano particles themselves is easy to reunite, so want to get single dispersive nano particles is very difficult. How to make the nano particles evenly dispersed in the matrix is the key technology of nanotechnology.

TOPTION ultrasonic series instruments use the cavitation of ultrasonic to disperse the coacervate particle. It put the required processing of particulate suspension (liquid phase) in the super sound field, use appropriate ultrasonic amplitude and duration to process. Due to the inherent characteristics of powder particles coacervate, so for some powder which could not be dispersed well in medium, you could add the right amount of dispersant to keep the dispersed steady state, general could reach dozens of nanometers, even more small. This type ultrasonic emulsification reactor is most suitable to disperse nano materials (graphene, silicon dioxide, etc).

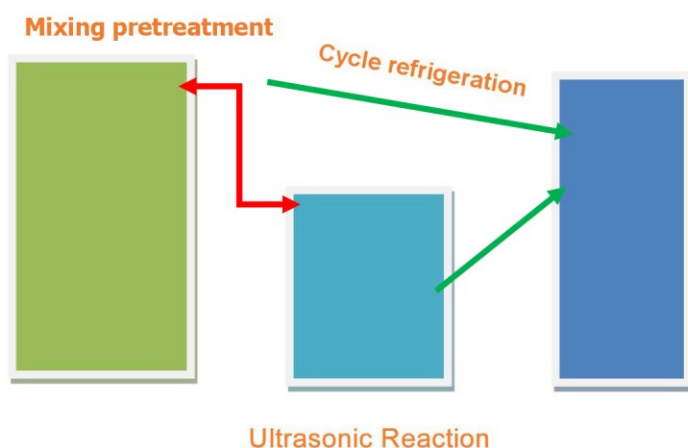
Ultrasonic Emulsification Reactor through its "cavitation effect" to realize the emulsification of oil blended with water, emulsification of water mixed with oil, the mixture and homogenization of dispersed phase and continuous phase, it's modern chemical technology to instead of propeller, colloid mill and other traditional emulsification technology.

Pilot ultrasonic emulsification reactor technical specification:

Model	TUER-5SUS / TUER-5SUD TUER-5SLS / TUER-5SLD TUER-5GLS / TUER-5GLD	TUER-10SUS / TUER-10SUD TUER-10SLS / TUER-10SLD TUER-10GLS / TUER-10GLD	TUER-20SUS / TUER-20SUD TUER-20SLS / TUER-20SLD TUER-20GLS / TUER-20GLD
Ultrasound Method	Energy-gathered circulation multiple-step type		
Capacity (L)	5	10	20
Stir Motor Power (W)	100	150	200
Ultrasonic Frequency	20KHz	20KHz	20KHz
Standard Ultrasonic Probe	∅ 40*1	∅ 40*1	∅ 40*1
Ultrasonic Power(w)	100~2400 Adjustable	100~2400 Adjustable	100~2400 Adjustable
Circulation Stirring Rate (rpm)	0~1000 Integrated Digital Display, Stepless Timing	0~1000 Integrated Digital Display, Stepless Timing	0~1000 Integrated Digital Display, Stepless Timing
Controlled Temperature °C (Optional)	0--100	0--100	0--100
Reactor Material	SS304/Glass	SS304/Glass	SS304/Glass
Applicable Medium	Volatility / Fixed Hydrocarbon	Volatility / Fixed Hydrocarbon	Volatility / Fixed Hydrocarbon
Application	Laboratory & Pilot	Laboratory & Pilot	Pilot
Note: Professional Customization is provided, high temp. device, low temp. device, constant temp. device are available (-5°C ~ 80°C).			

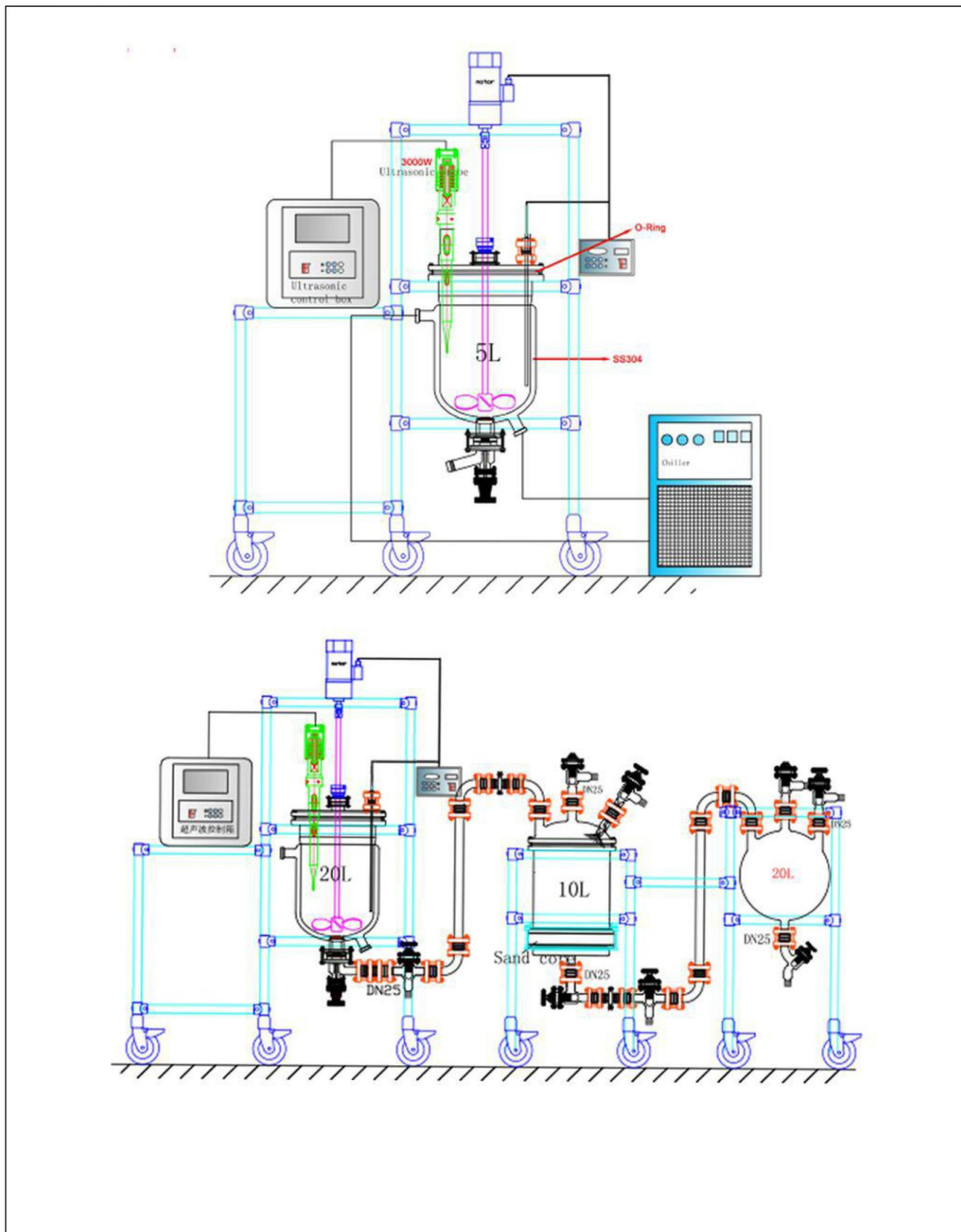
We can **customized** kinds of volumes ultrasonic reactor system, support customized 50L, 100L, 150L, 200L.

Equipment into three parts:



An important characteristics of ultrasonic emulsification is that, there's no need or less need emulsifier to get very stable emulsion. The obvious advantages of ultrasonic emulsification has prompted it in food, chemical, pharmaceutical, textile, paper making, paint, fuel thermal power, fuel central air conditioning, petroleum, metallurgy and many other industrial process has been applied more and more, including down fuel combustion is an important project to rise.

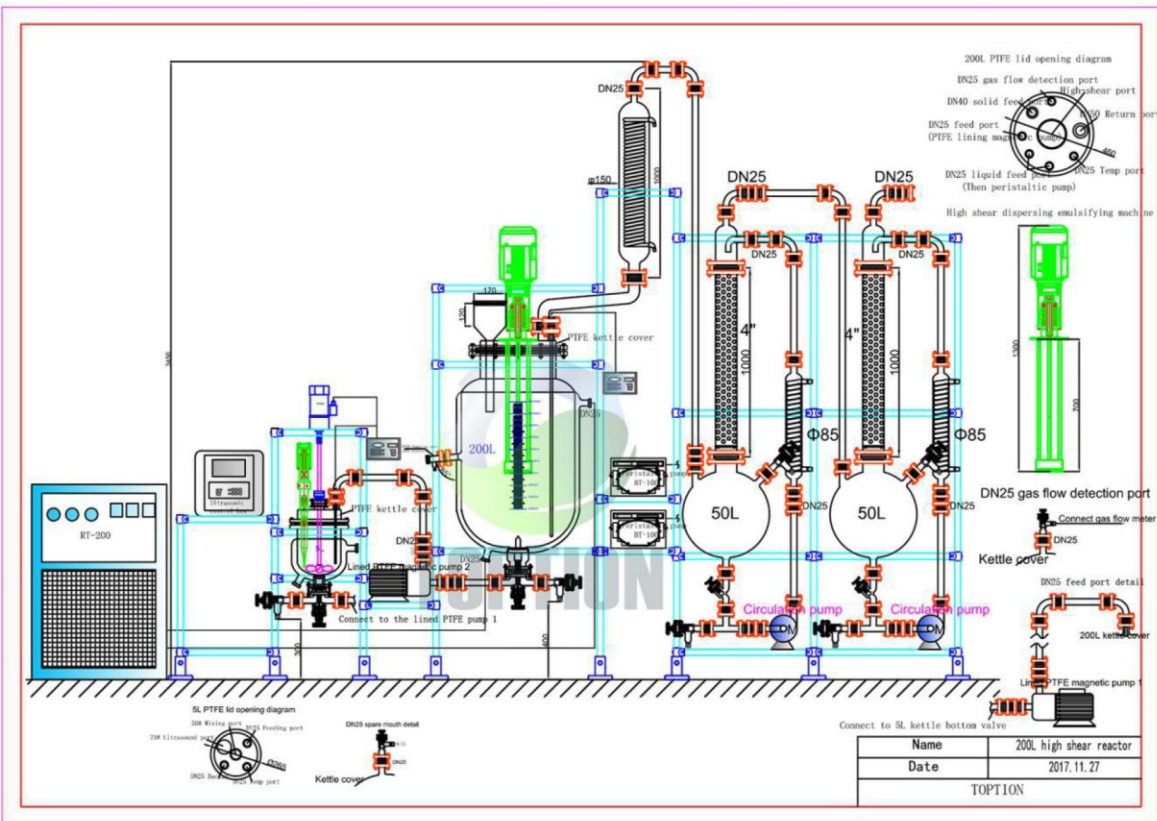
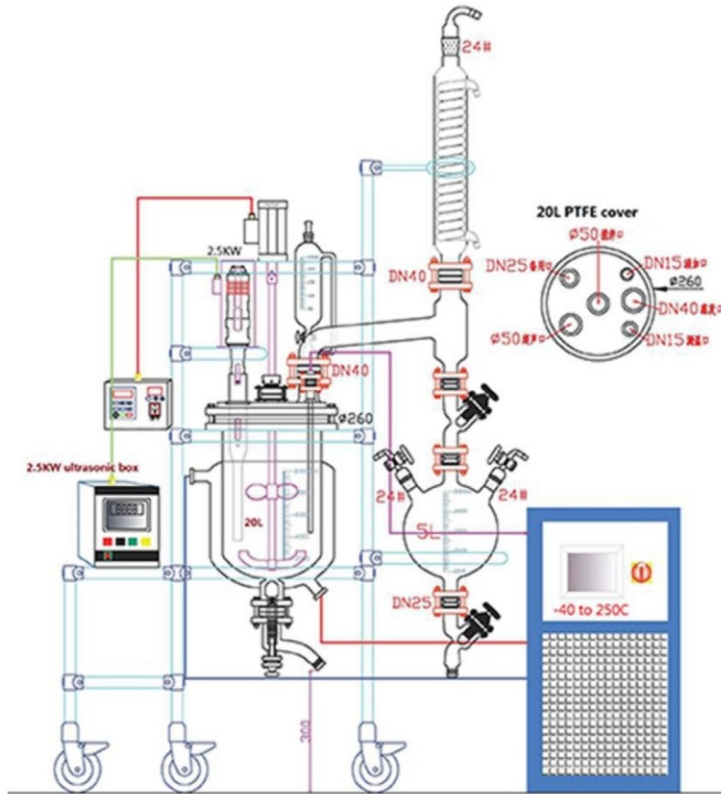
Ultrasonic reactor drawings are as follows:



Ultrasonic cell crusher

Ultrasonic material dispenser

Ultrasonic reactor drawings are as follows:



TUHP Series High pressure ultrasonic reactor system

Function:

This type ultrasonic reactor is often used in laboratory extraction and chemistry reaction research, which has solve amplitude transformer and reactor sealing problems, could equip various types chemical reactors' accessories under high temperature, achieve reaction system gas separation and vapour phase condensation & reflux. So could use ultrasonic disperse, crush, and excitation etc multiple effect to break the solvent structure of chemical reaction material in reactor, improve reaction activity, disperse and crush particles, reduce its radius.

According to actual research operation, this type ultrasonic reactor could accelerate reaction effect when powder substance participate the reaction, emulsion reaction and homogeneous reaction, etc. So this advanced practical type ultrasonic reactor could accelerate chemical reaction.

Ultrasonic reactor is consist of ultrasonic signal generator, stirring, constant temperature device, stainless steel pressure resistance reactor body, energy-gathered ultrasonic transducer and titanium alloy amplitude transformer. Ultrasonic transducer is fastened on reactor body through professional flange, ensure air pressure no leakage, reactor could customize double layer or three layers to heating or cooling, at the top of reactor could install dedicated magnetism-stress coupling adjustable-speed motor so as to guarantee there's no dead angle in reactor. Could customize material charging, discharging, reflux device, etc. Reactor lid could choose mechanical lifting device.



TUHP-500ml laboratory type



TUHP-10L industrial type

technical parameter:

Model	Pressure (Mpa)	Temperature °C	Capacity ml	Ultrasonic power (w)
TUHP-150ml	-0.1-12.5	RT-300	150ml	10-500w continuously adjustable
TUHP-250ml	-0.1-12.5	RT-300	250ml	20-1000w continuously adjustable
TUHP-500ml	-0.1-12.5	RT-300	500ml	100-1200w continuously adjustable
TUHP-750ml	-0.1-12.5	RT-300	750ml	200-1500w continuously adjustable
TUHP-1L	-0.1-12.5	RT-300	1000ml	300-1800w continuously adjustable
TUHP-2L	-0.1-12.5	RT-300	2000ml	400-3000w continuously adjustable
TUHP-5L	-0.1-12.5	RT-300	5000ml	500-3500w continuously adjustable
TUHP-10L	-0.1-12.5	RT-300	10000ml	800-5000w continuously adjustable



Ultrasonic cell crusher

Ultrasonic material disperser



Note: Mechanical stirring reactor lid is available, could achieve the exchange of mechanical stirring and energy-gathered ultrasonic, or you also could install mechanical stirring at the top of reactor, install energy-gathered ultrasonic at the bottom. Special capacity, special material, special pressure and special temperature could customize, max pressure could reach 40Mpa. Max temperature could reach 400°C, low temperature could reach -50°C, max ultrasonic power could customize 100KW, max capacity could customize 1000L.

KGC

EMPOWERING FUTURE
THROUGH RESEARCH & INNOVATION

**DESIGN YOUR PERFECT
LABORATORY WITH OUR**

PRODUCT CATALOG

For South East Asia Inquiries:

KGC RESOURCES SDN BHD (223165-D)
No. 2-2-3, Jalan Setia Prima E
U13/E Setia Alam, Seksyen U13
40170, Shah Alam, Selangor
Malaysia

WhatsApp Us at: **+6014 964 9880**
Call Us at: **+603 3341 2880**
Search Us at: **www.kgcscientific.com**
Email Us at: **sales@kgcscientific.com**
or **info.kgc00@gmail.com**

For Indonesia Inquiries:

PT KGC SAINTIFIK
Jalan Kamal Raya (Kompleks Ruko CBD)
Blok A2-07, Cengkareng Timur
Jakarta Barat 11730
Indonesia

WhatsApp Us at: **+62 899 7255 675**
Call Us at: **+62 212 2522 110/+62 212 2522 114**
Search Us at: **www.kgcscientific.com**
Email Us at: **sales@kgcscientific.com**
or **info.kgc09@gmail.com**